

Wonderful view onto the listed Christ the Saviour church from one of the greened roof terraces.

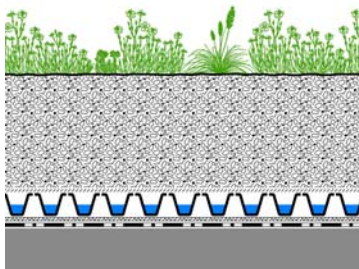
Conception

A former council-owned public car park was transformed into a high-density mixed-use development in the heart of Ealing, London, including retail space, private apartments, as well as public realm with a shopping street and a public square. And all this in the centre of a conservation area with various listed buildings nearby such as Christ the Saviour church, the Town Hall and Ealing Fire station.

Apart from a sedum roof on one of the buildings, podium courtyards and roof-top terraces had to be greened.

On the roof terraces, planters were installed with Floradrain FD 40-E forming the heart of the build-up system. These were greened with a variety of small trees and shrubs with low maintenance requirements. The residential courtyards come in a variety of styles, one with an open design with eye-catching rolling mounds of artificial grass, and another smaller yard with large trees, dense hedging and a wooden pergola. All plantings were based on ZinCo build-ups with Floradrain FD 40-E combined with roof garden or heather with lavender system substrate.

System Build-up



- Plant layer according to design plan
- System Substrate "Heather with Lavender" or "Roof garden" as required
- Filter Sheet SF
- Floradrain® FD 40-E
- Protection Mat SSM 45 or ISM 50
- Roof construction with root resistant waterproofing



An open design courtyard with rolling mounds made from artificial grass and integrated benches inviting the residents to stay.



All courtyards were built on top of an underground carpark requiring suitable podium build-ups for drainage management.

Project Data

Area: ca. 600 m²

Construction Year: 2017

Architect: John Thompson & Partner (JTP), London

Landscape Architect: Randle Siddeley Associates, London

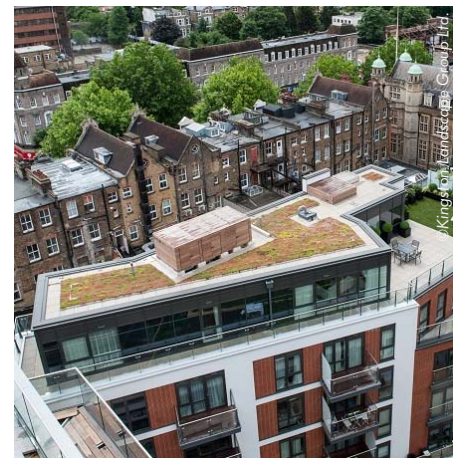
Landscape Contractor: Kingston Landscape Group Ltd., Twickenham

System build-up: "Roof Garden" and "Heather with Lavender" with Floradrain® FD 40-E, "Sedum Carpet" with Floradrain® FD 25-E

Coordinates: 51°30'49.7"N 0°18'21.8"W



View from above onto one of the courtyards of Dickens Yard residential development.



A green roof with sedum matting and aluminium edging was installed on one of the buildings.



Residential courtyard with large trees and dense hedging and a wooden pergola.

