



The roof of the new golf clubhouse building consists of different partial shapes with different inclinations.

### Project Data

Area: ca. 2.000 m<sup>2</sup>

Construction Year: 2016–2017

Architect:  
zanderarchitekten, Dresden

Contractor:  
Thomas Ruppricht Dachdeckerfach-  
betrieb, Dresden

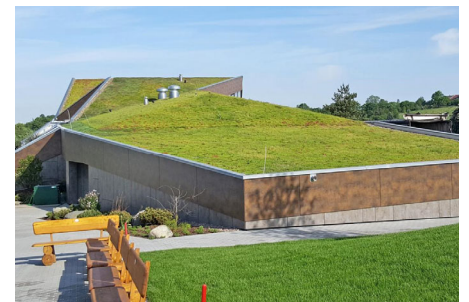
System Build-up:  
"Pitched Green Roof" with  
Floraset® FS 75

Coordinates:  
51° 0'32.08"N 13°29'53.54"E

### Conception

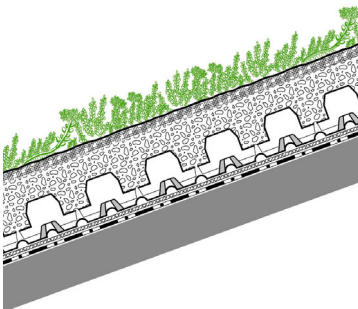
A new clubhouse was built on the site of the existing golf course Wilsdruff in Herzogswalde. It includes a restaurant and amenities such as a sauna, a gym, a lounge and an apartment with a roof terrace. The building with its unique roof shapes fits perfectly into the hilly landscape. Due to the full-surface extensive green roof, the clubhouse blends in with the surrounding landscape.

The Protection Mat BSM 64 and the overlying Floraset® FS 75 elements, which had been developed especially for use on pitched roofs, were used for the System Build-up and laid over the entire surface. The large studs face upwards and prevent the system substrate from sliding. The vegetation mats provide for a quick coverage and immediate protection against wind suction and erosion.



Floraset® FS 75 elements were installed on the entire surface of the approx. 2.000 m<sup>2</sup> roof.

### System Build-up



- Pre-cultivated Vegetation Mats "Sedum Carpet"
- System Substrate "Rockery Type Plants"
- Floraset® FS 75
- Protection Mat BSM 64
- Roof construction with root resistant waterproofing



Since 2017 the green roof has been part of the golf course Herzogswalde in Wilsdruff.

### Development



The roof area after application of the System Substrate "Rockery Type Plants".



Pre-cultivated Sedum mats were used to achieve a quick ground coverage.



The approx. 2 m<sup>2</sup> vegetation mats were laid tightly joined without overlap.

