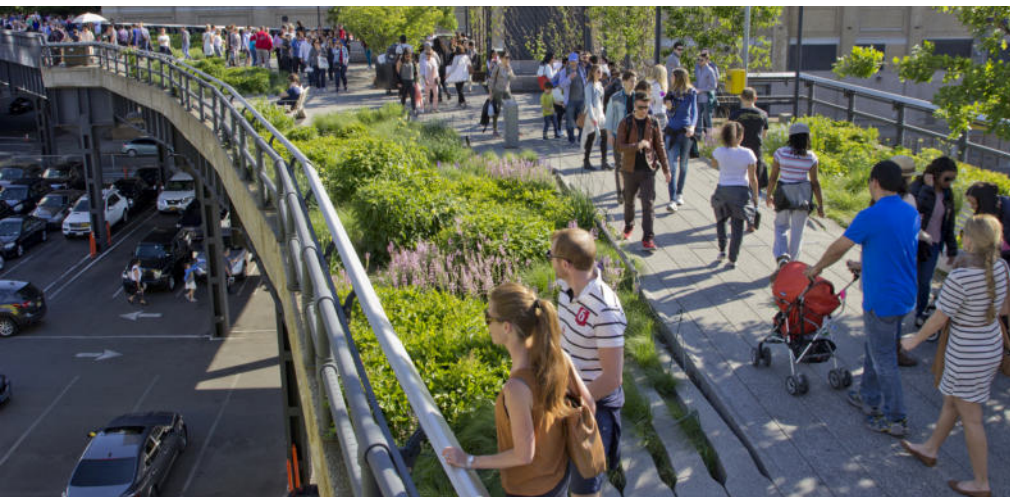


PROJECT REPORT



HIGH LINE PARK, NEW YORK CITY



PROJECT DATA

Area: ca. 2.400 m length,
9 to 18 m width
realization in 3 sections of about
800 m length each

Opening:

- Section 1: June 2009
- Section 2: June 2011
- Section 3: September 2014

Landscape architect:
James Corner, Field Operations

Contractor:
Kelco Landscaping

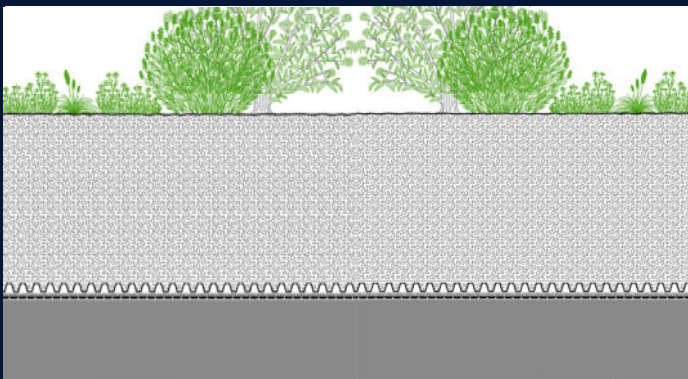
SYSTEM BUILD-UP

Plant layer

System Substrate

Filter Sheet SF
Floradrain® FD 25-E,
infilled with Zincblend M
Protection Mat

Roof construction with root resistant waterproofing



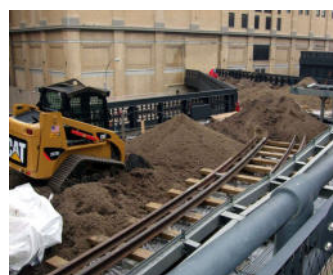
CONCEPTION

In 2003, a team consisting of the landscape architect James Corner with his office Field Operations, the architects Diller Scofidio + Renfro and the plant specialist Piet Oudolf won the international ideas contest "Designing the High Line". Their concept included ponds and benches. Viewpoints should allow splendid views of the Hudson River, the Empire State Building and the Statue of Liberty. Staircases and elevators - similar

to those of interurban railway stations - were planned in regular distances. It was the planner's objective to preserve the natural flora and wilderness which had developed over the years on the former freight train line. The rails should remain visible in remembrance of the historical origin. In the meantime 210 plant species, including numerous shrubs and trees, thrive in a height of 5-9 m and a substrate depth of about 450 mm.



Installation of the green roof build-up under the rails. The drainage layer consists of infilled Floradrain® elements.



The average substrate depth is 450 mm.



More than 200 different plant species were used.

Zinco GmbH

Lise-Meitner-Strasse 2 | 72622 Nuertingen | Germany

Phone +49 7022 6003-0 | info@zinco-greenroof.com | www.zinco-greenroof.com

